



UNIBET

ARENA

Preliminary VENUE INFO

Welcome to Unibet Arena!

www.unibetarena.com

GENERAL INFORMATION

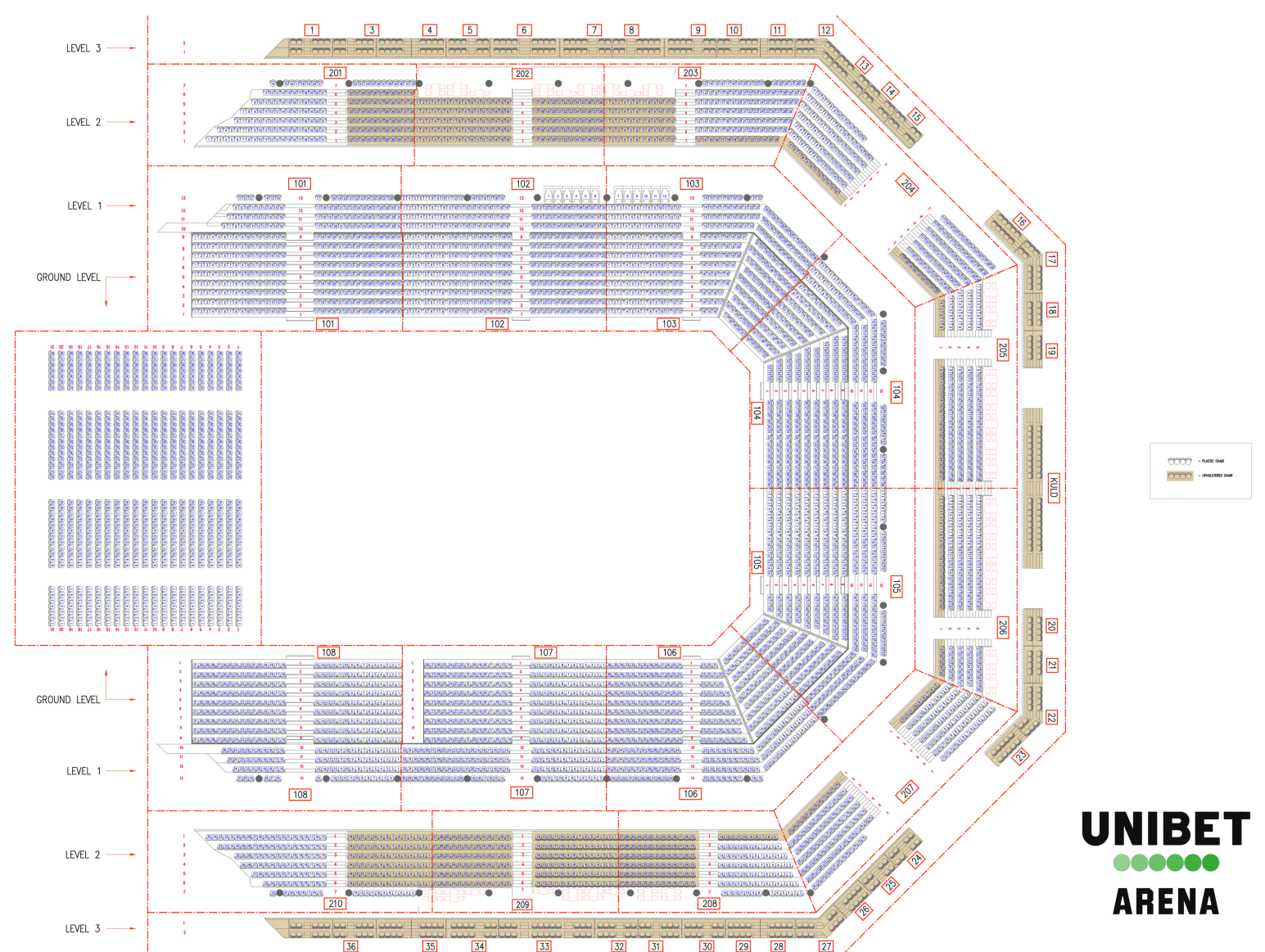
Venue Name:	Unibet Arena
Venue Address:	Paldiski mnt 104B, 13522, Tallinn
Webpage:	www.unibetarena.com
Capacity:	See Page 3-5
Load In:	See Page 7-8
Venue Stage:	No fixed stage, can be rented out from the venue
Clearance:	16 m and 14.5 m above the stage/load in area
Rigging:	Catwalk under the ceiling, load capacity different during summer and winter (Page 9-10)
Power:	1050 A for the stage, total max 2000A (Page 11)
Mixer Positions:	As per choice, no fixed positions
Backstage Rooms:	9 bigger and 6 smaller rooms (Page 12)
Internet:	Public and private WIFI networks, speed up to 1000/1000, LAN outputs
Catering:	Fixed catering partner Nordic Catering, many different catering areas available
Merchandising:	Operated through Unibet Arena, fee according to the rental contract
Pyro:	Possible, permit for working with fire or licensed professional required
Venue Regulations:	Limited storing, corridors and fire lanes must be kept clear at all times Dedicated smoking areas Limited blackout available
Noise Limits:	No limits

Please contact the arena to access the capacity, rigging and power plans separately and for any further details.

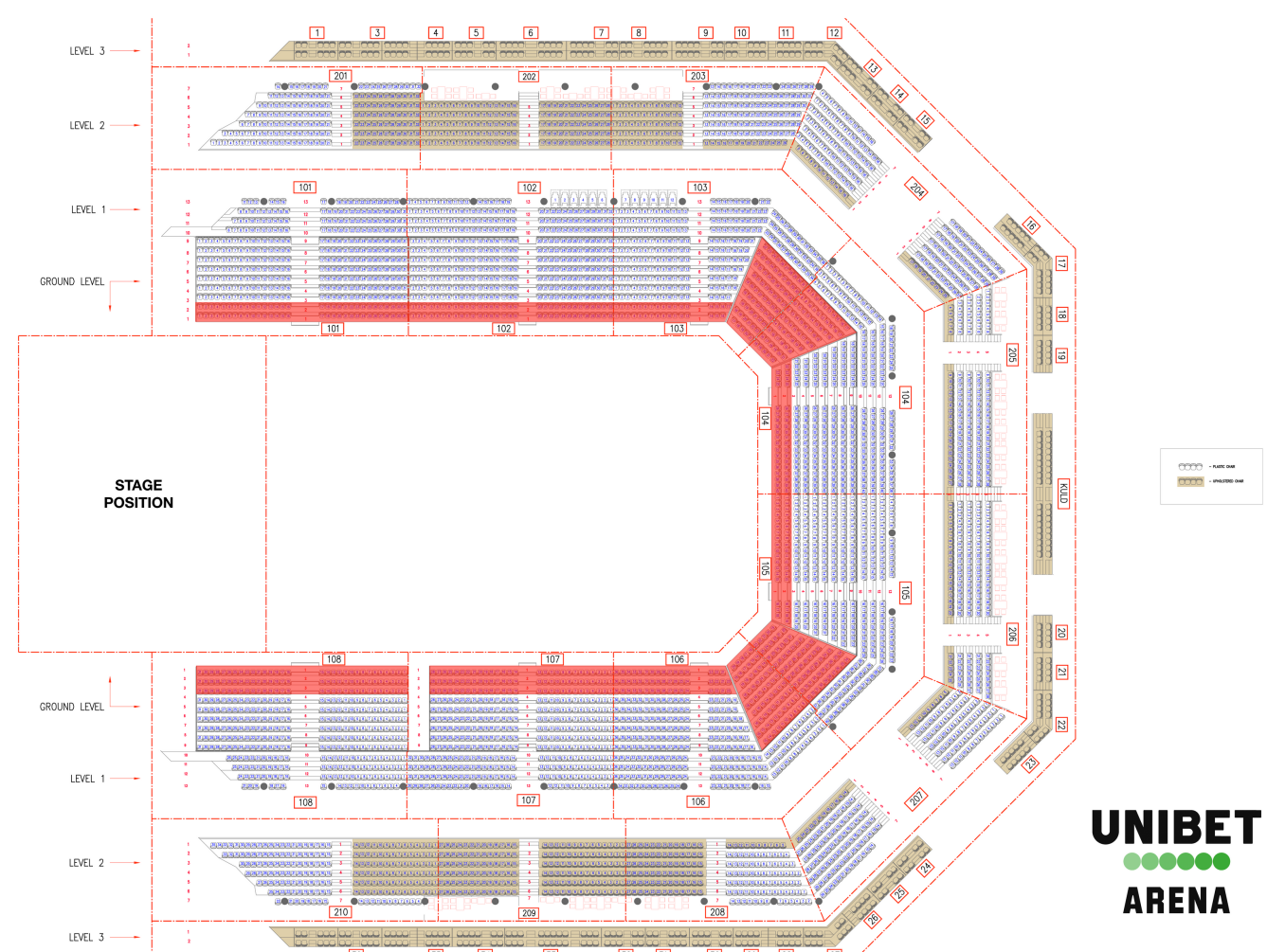
ARENA AND CAPACITY

- Smooth concrete floor
- Possibility to cover with black PVC (60x30 m)
- Removable seating on the arena level
- Dimensions of free surface of the arena: 70x43 m = 3010 m² (including blackbox)
- Dimensions of surface with full tribune: 44x29 m = 1276 m² (including seated show)
- Dimensions of surface with tribune in a hockey set-up: 44x33 m = 1452 m² (including standing show)

Full tribune without floor: 6310 people

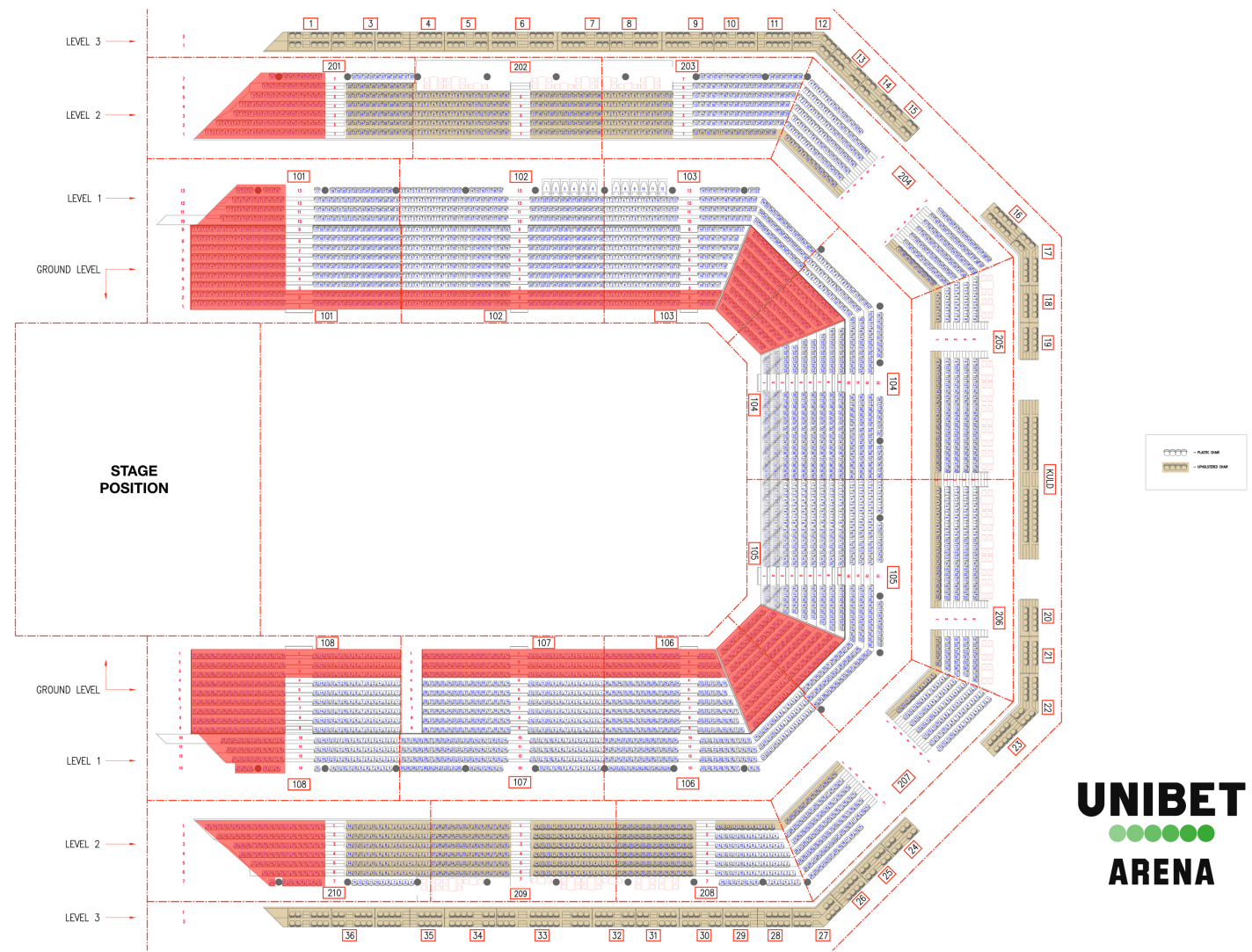


Full hall standing: 9277 people

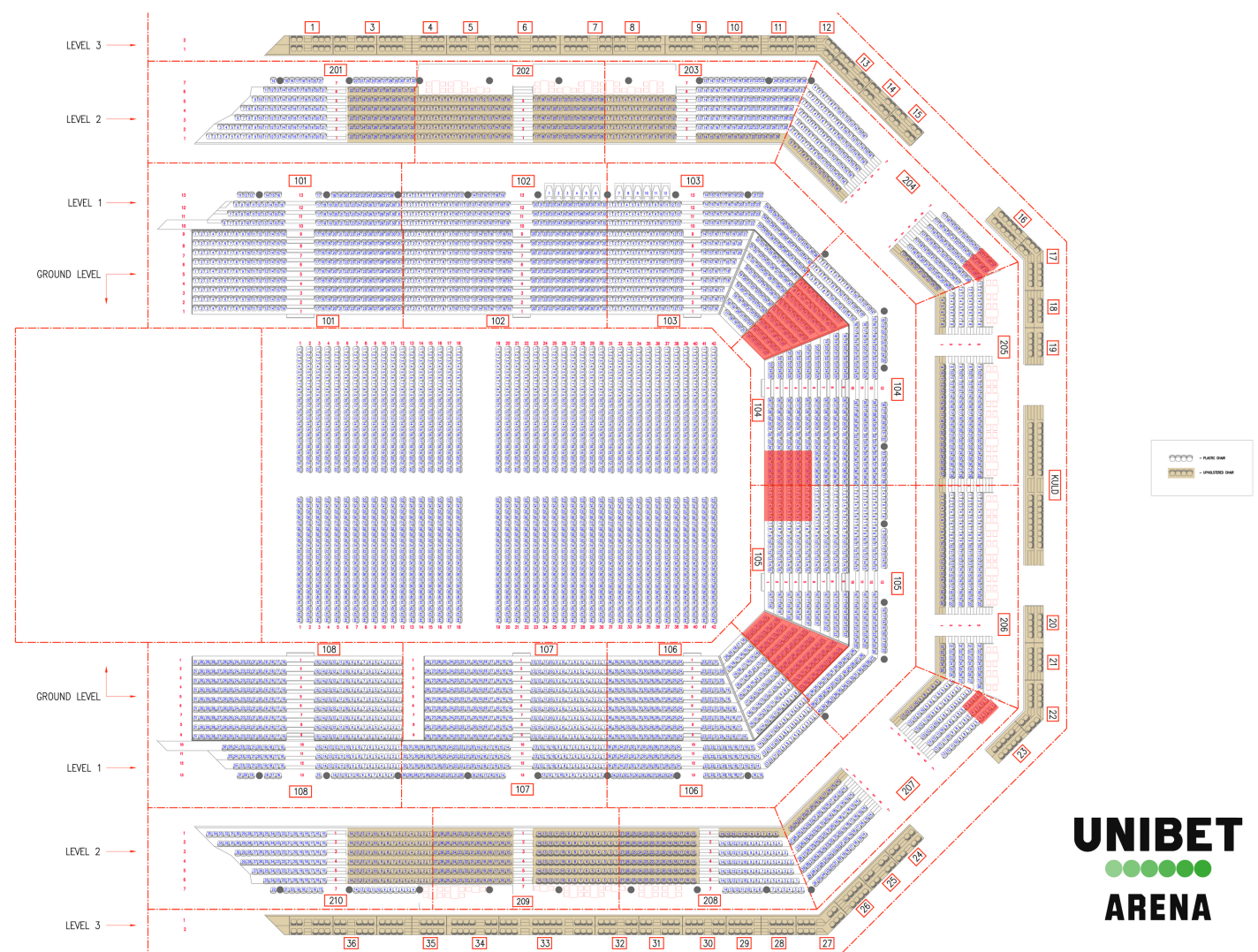


ARENA AND CAPACITY

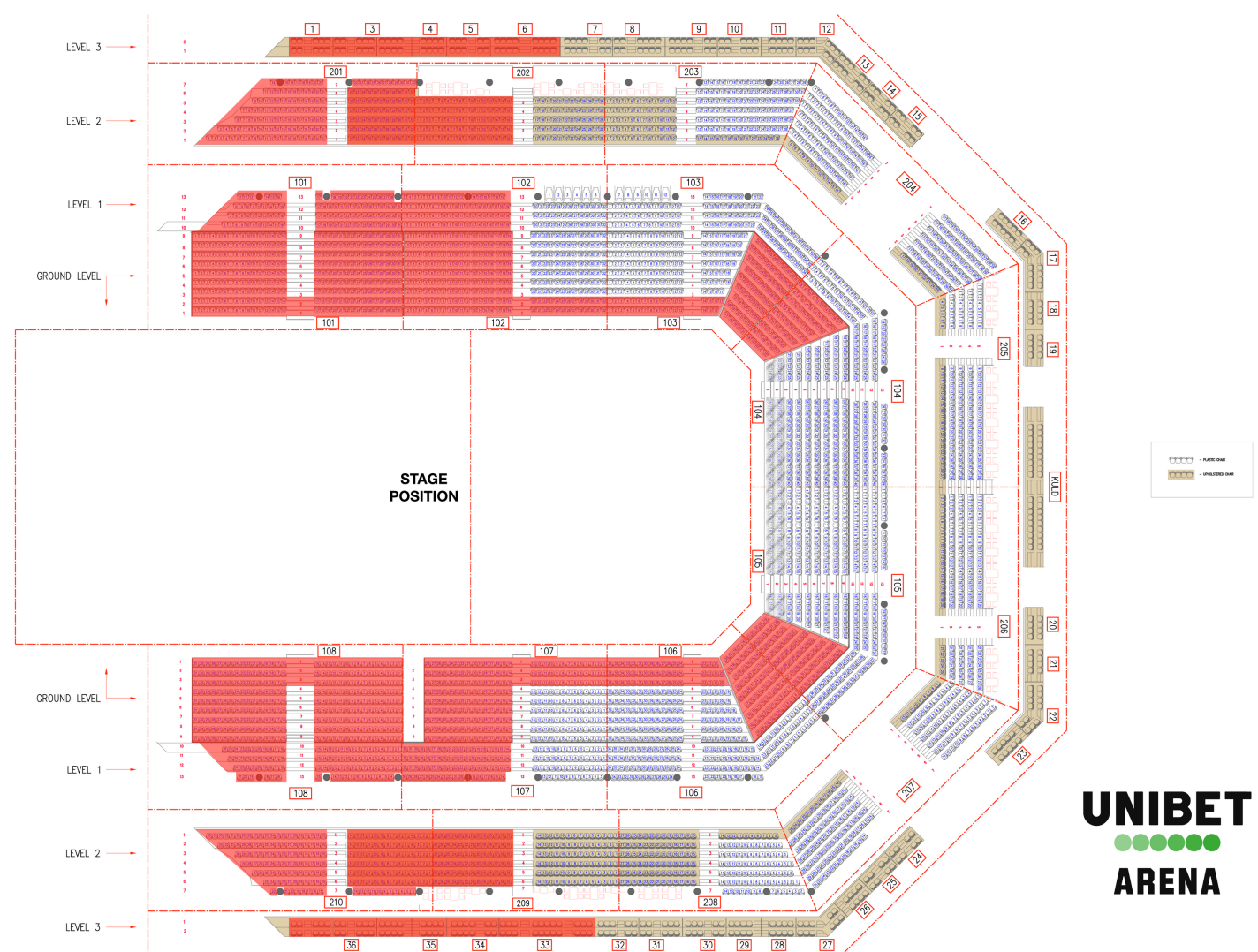
Full hall 180° standing:
9023 people



Full hall seated:
7090 people

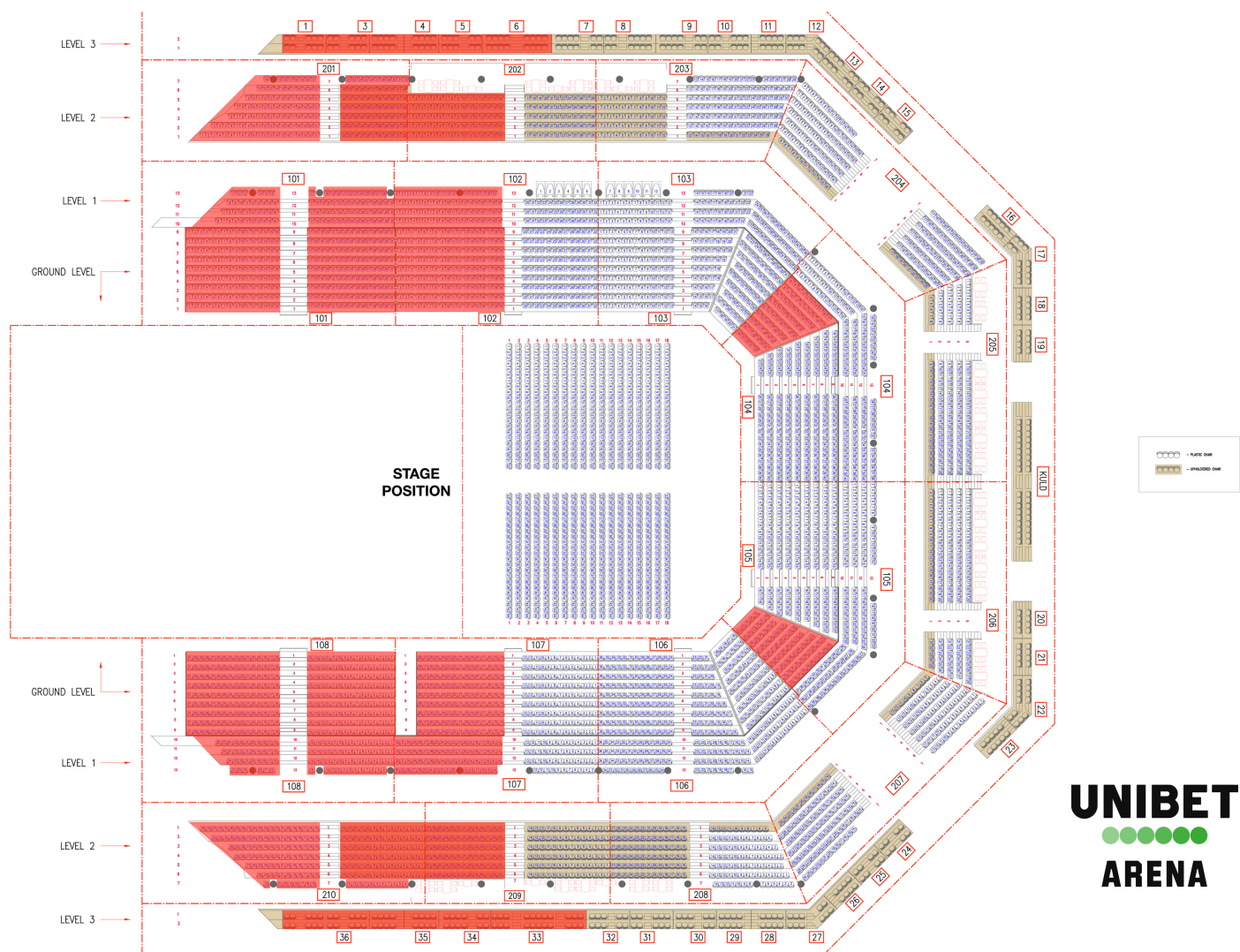


Half a hall standing:
5939 people

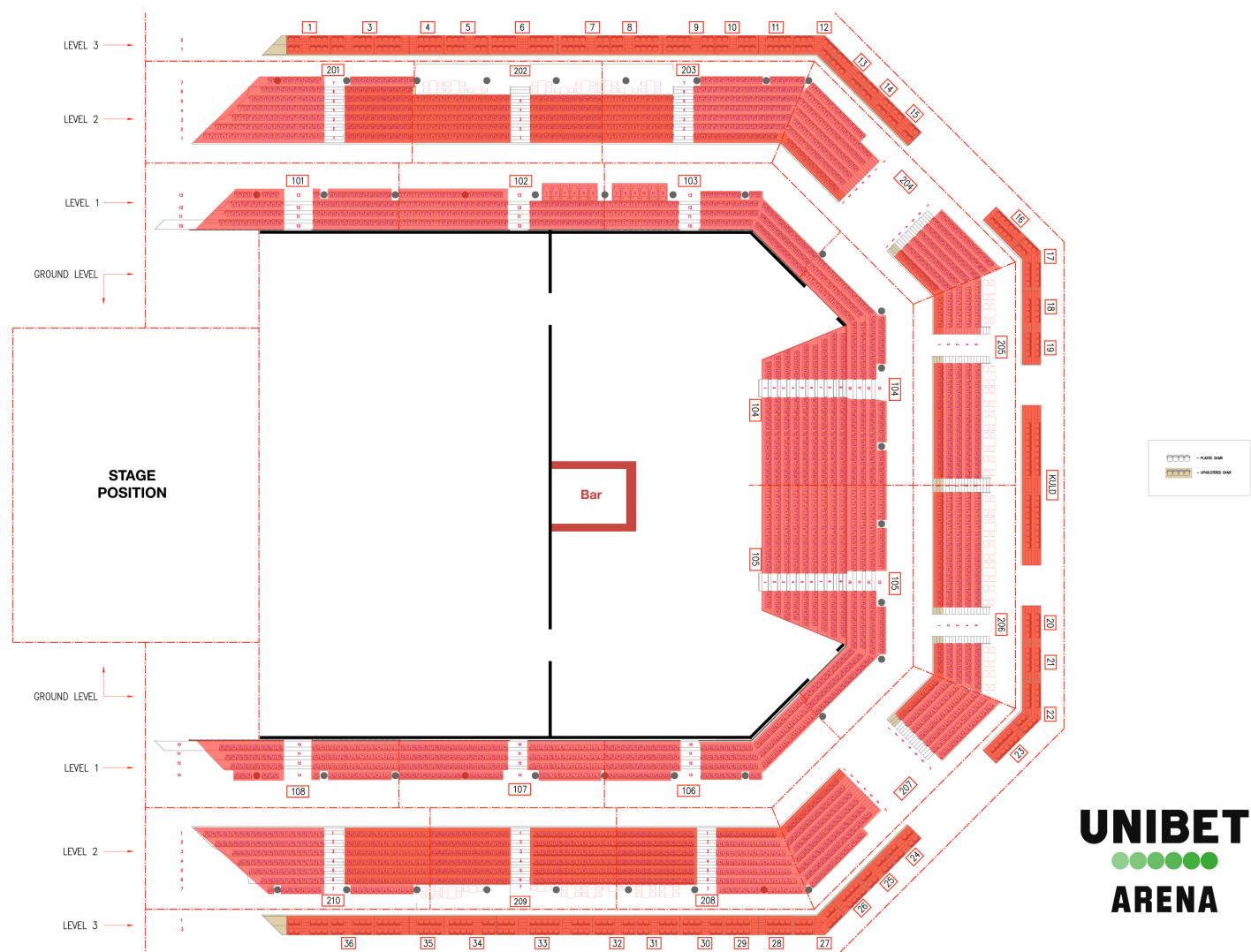


ARENA AND CAPACITY

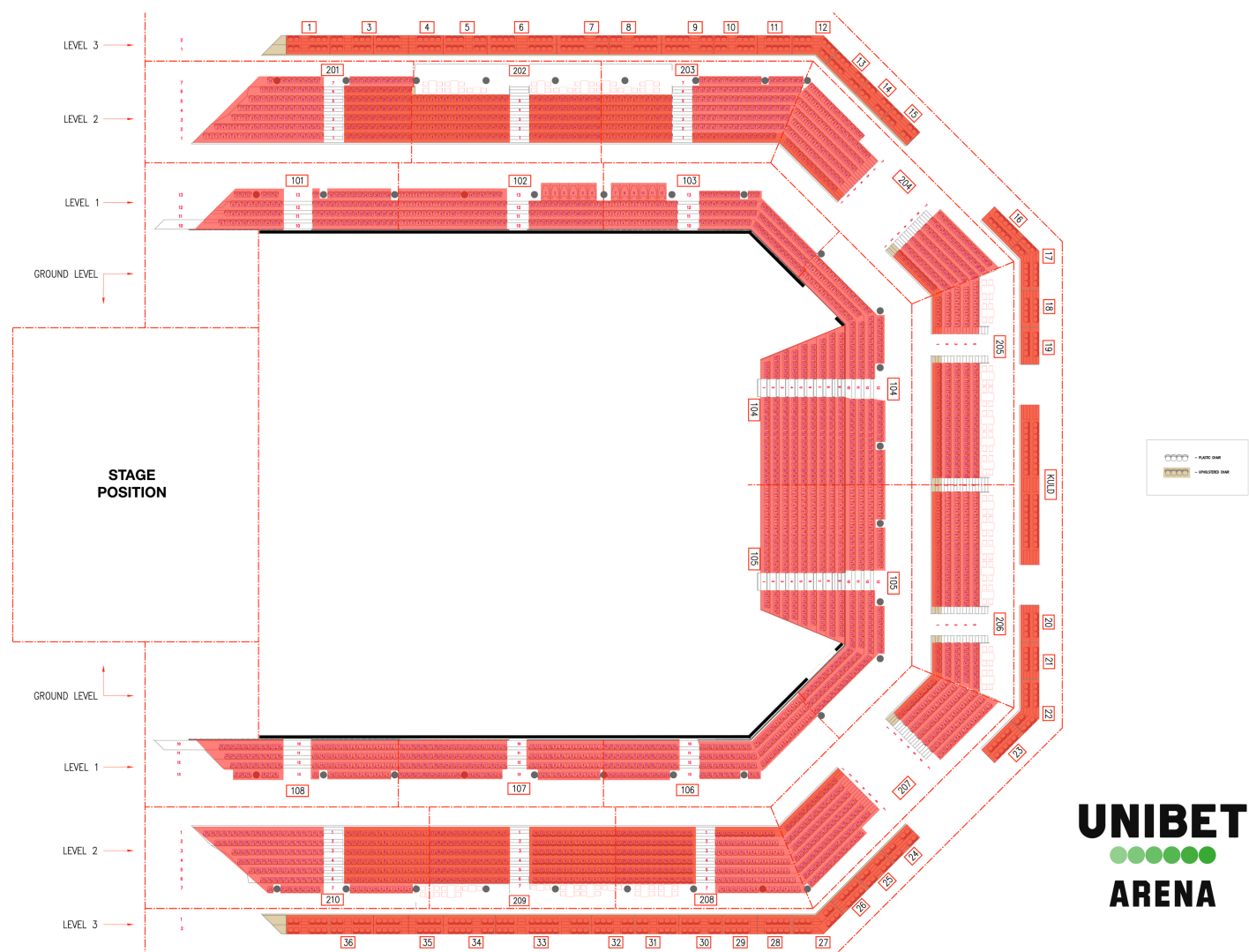
Half a hall seated:
3447 people



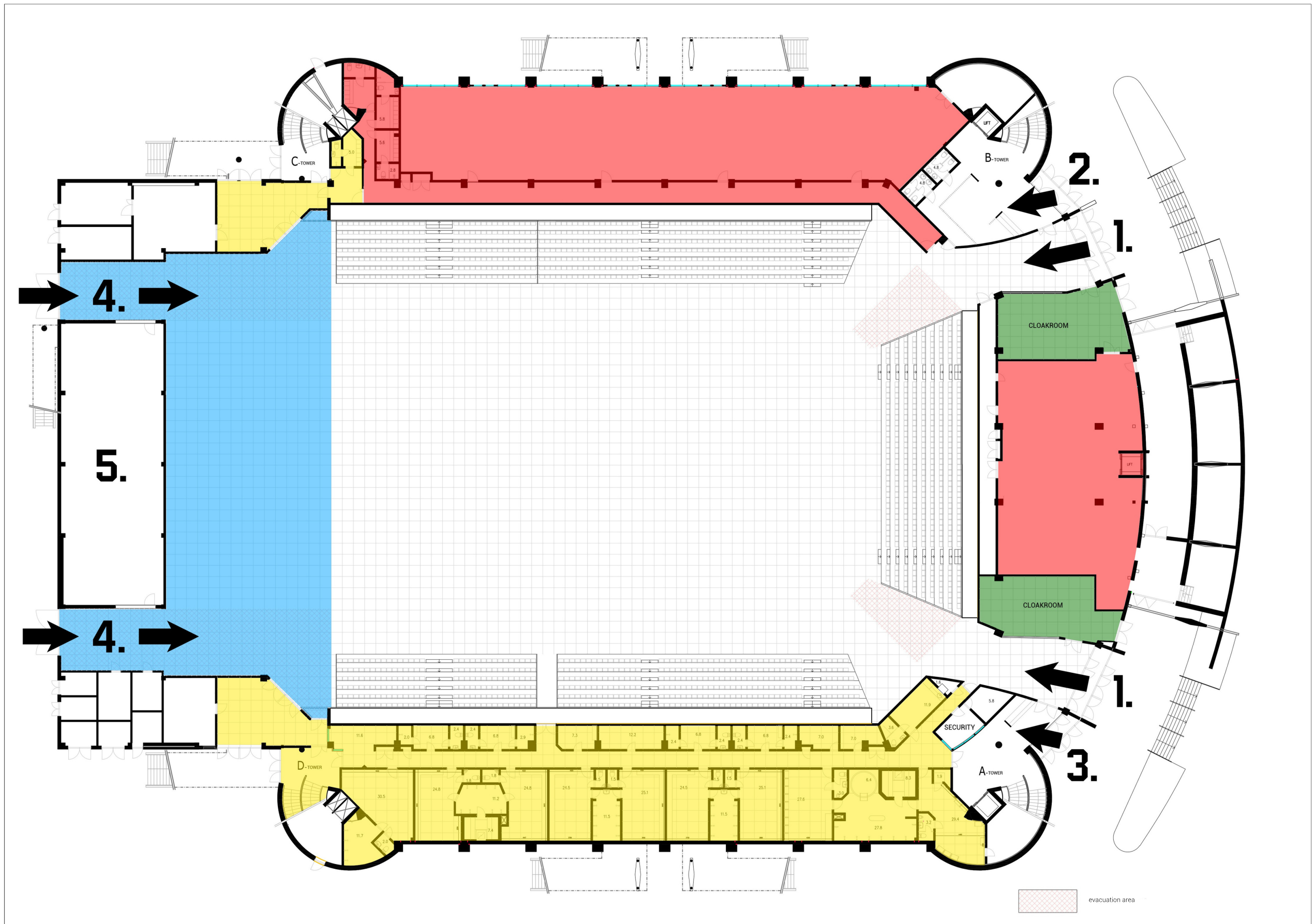
Half a blackbox:
2500 people



Blackbox:
4500 people



MAIN AREA OVERVIEW



1. Audience entrances

2. Skybox, club chair and wheelchair entrance

3. Personnel entrance

4. Load in entrances

5. Storage and tech area

■ Catering

■ Backstage

■ Stage and production (no drive-in capability)

■ Paid cloakroom for the audience

LOAD IN

LOCATION OF THE VENUE:

Paldiski mnt 104B, Tallinn 13522, Estonia

59°25'33" N 24°38'50" E



Roads marked with green arrows are the most viable for trucks. Rest of the roads around the venue may be inaccessible for trucks during peak hours.

Please consult with venue if power is needed outside.

Please consult with venue in case of arrival outside of office hours.

Please consult with venue if use of toilet and shower facilities are required outside of the rental period.

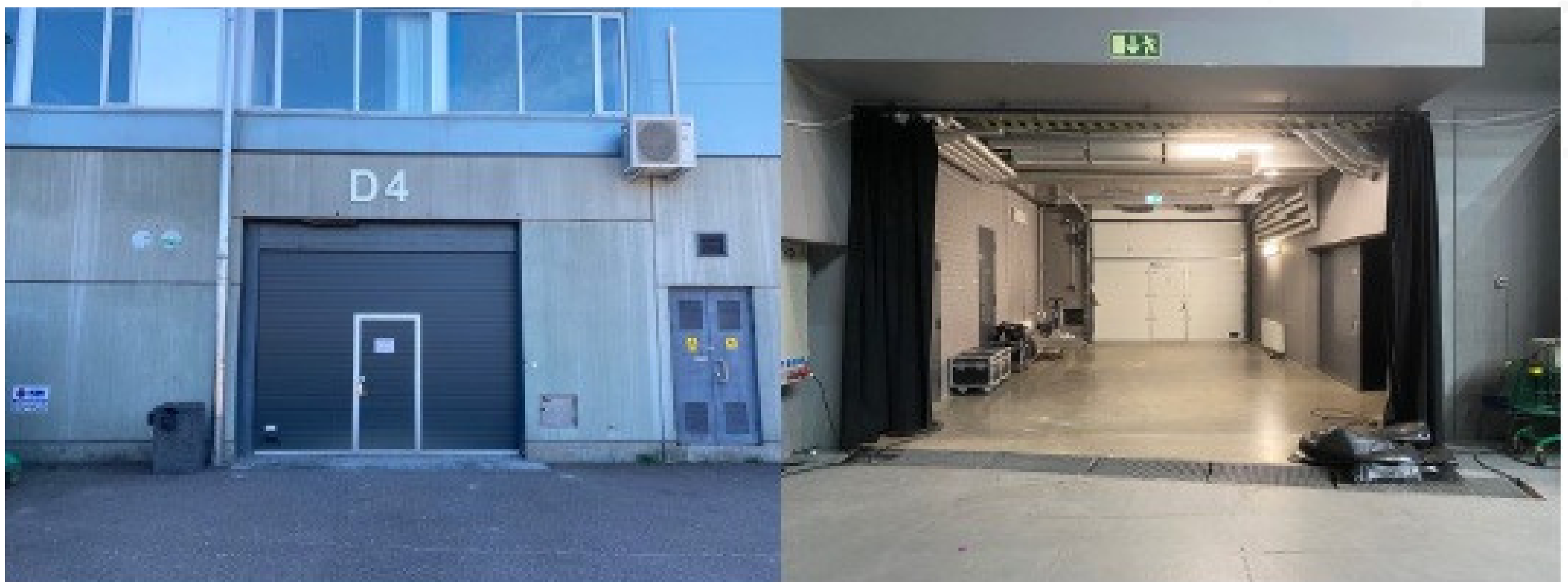
LOAD IN

LOADING DOORS

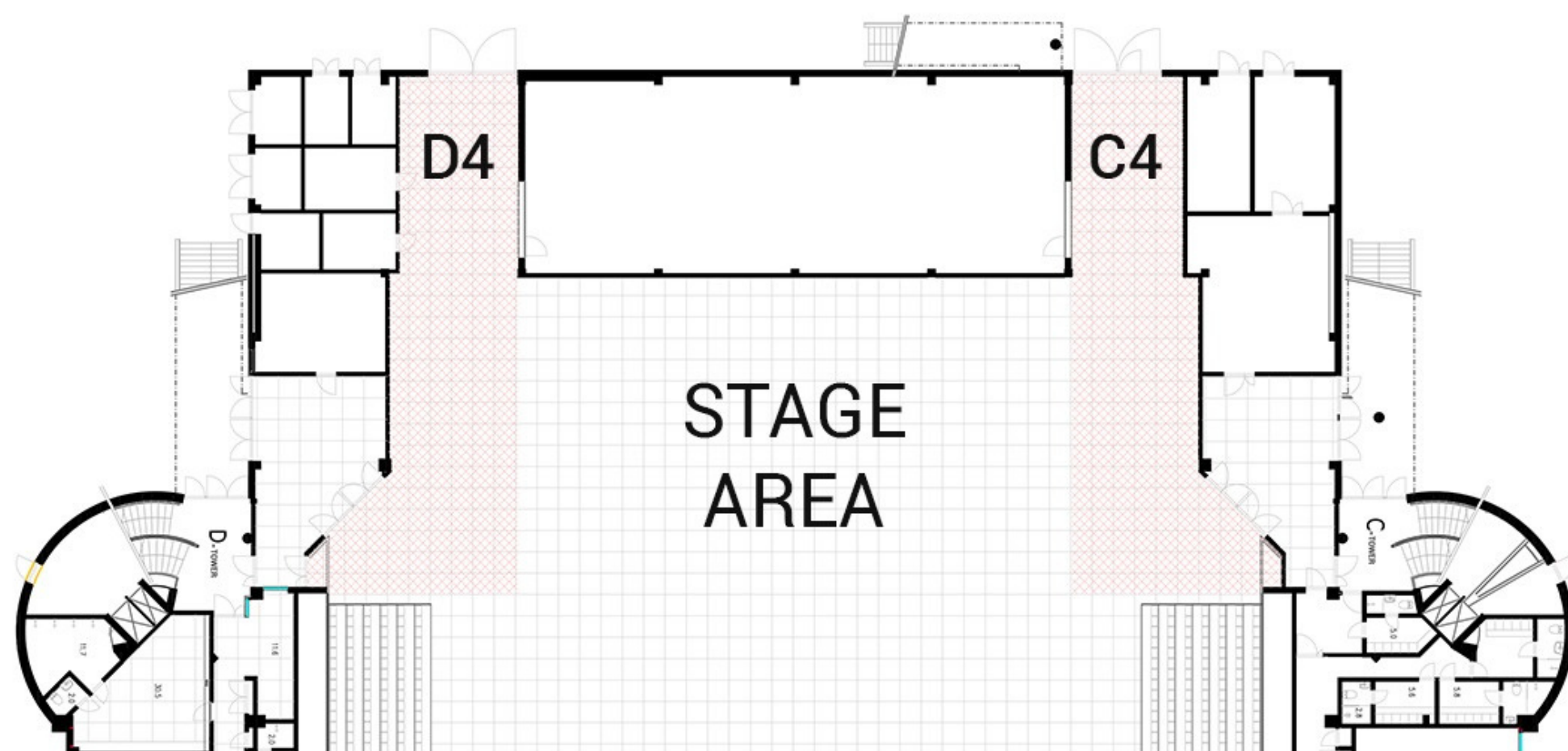


C4 door size: 3,1 x 3,8m

D4 door size: 2,9 x 3,9m

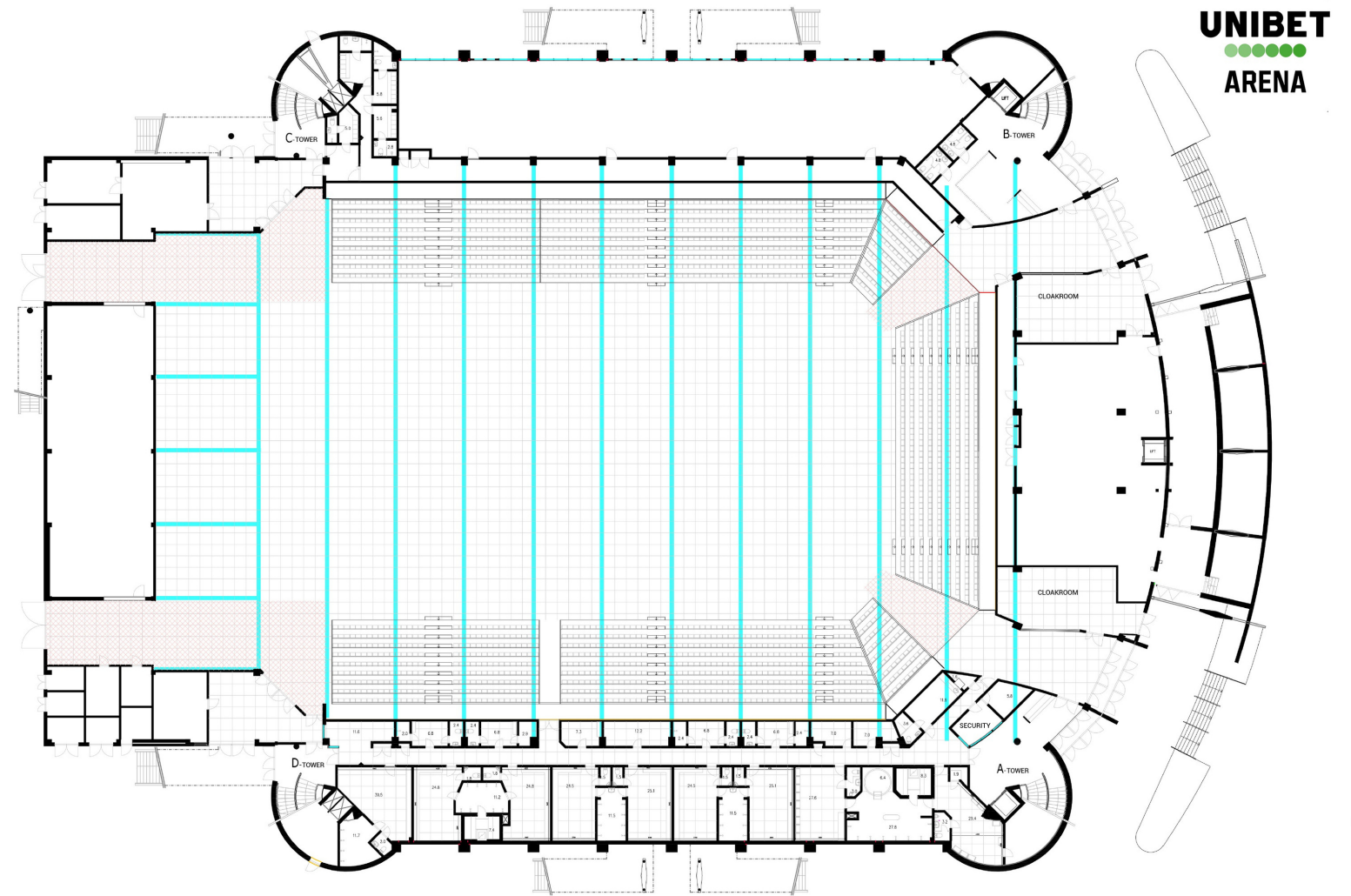


LOCATION OF LOADING DOORS

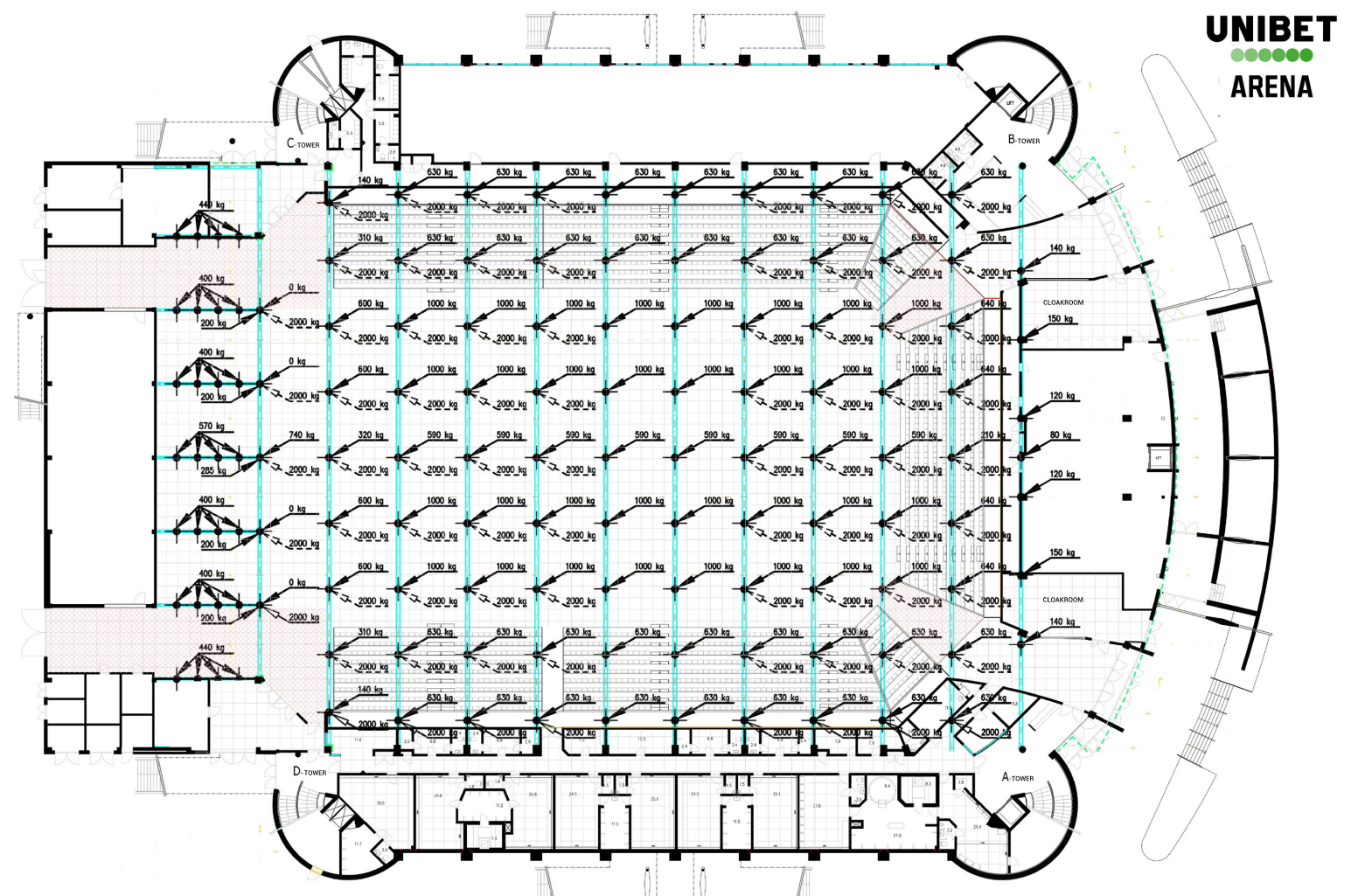


RIGGING

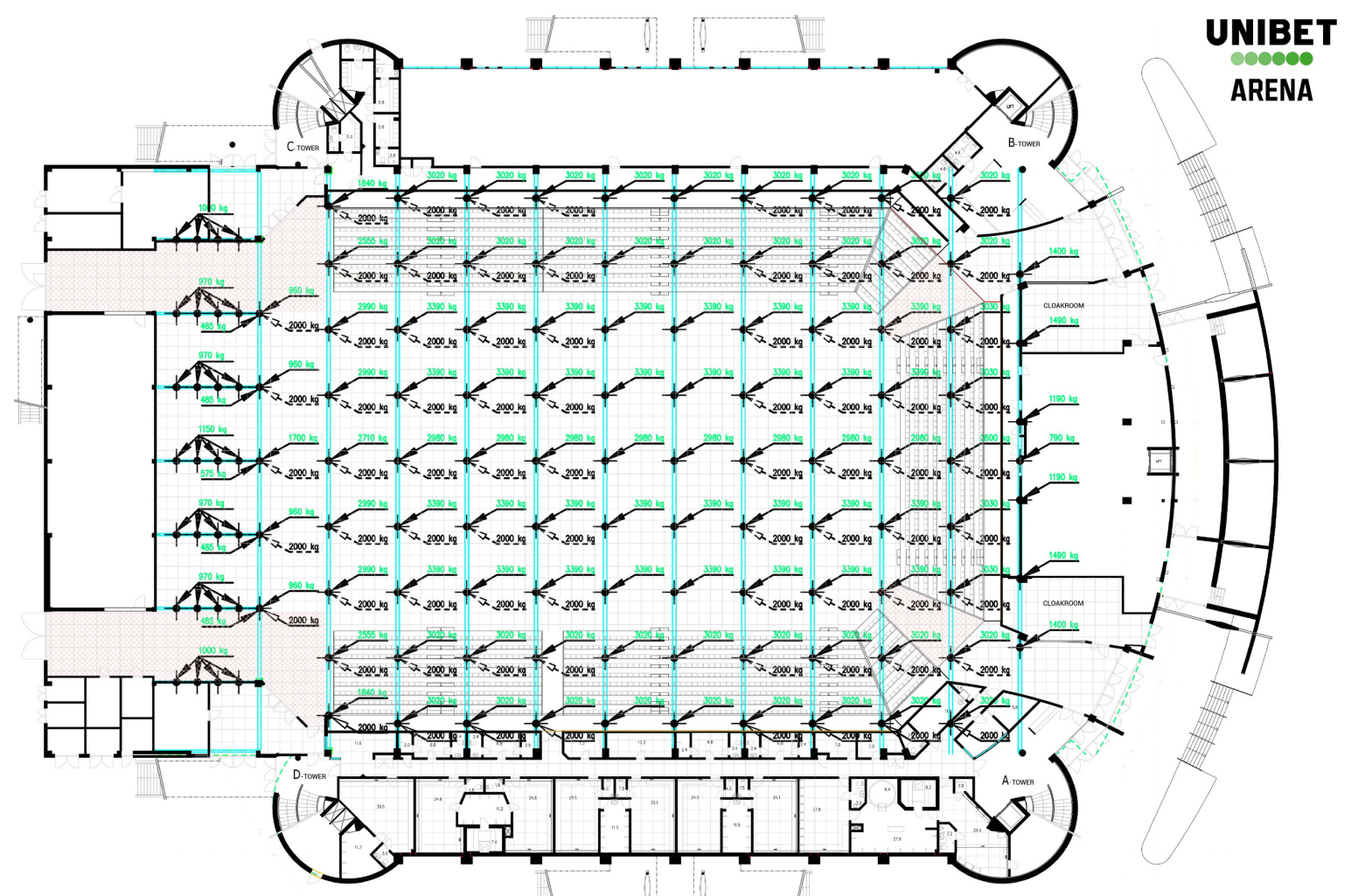
Rigging beams (steel beams are equipped with safety ropes):



Winter rigging:

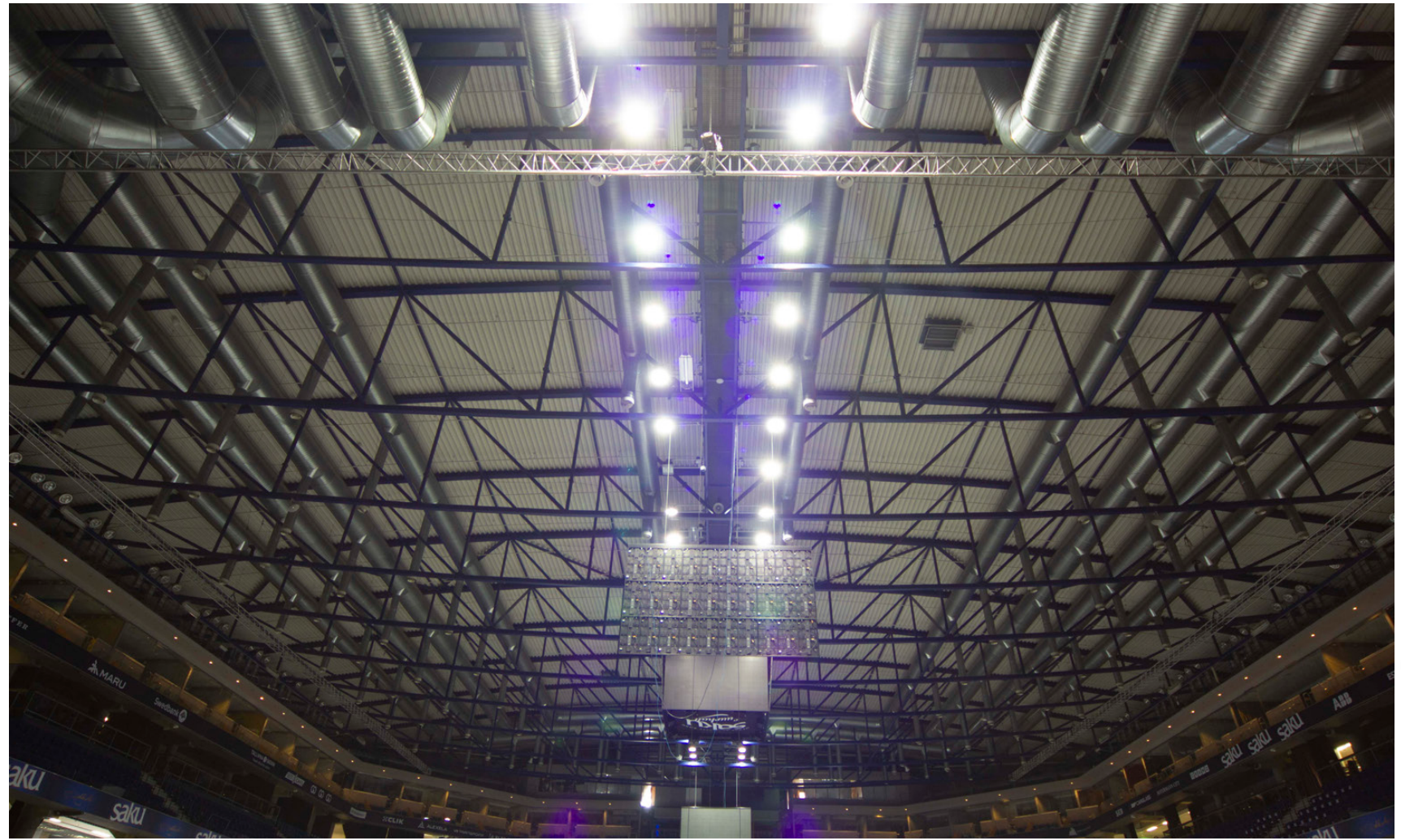


Summer rigging:



RIGGING

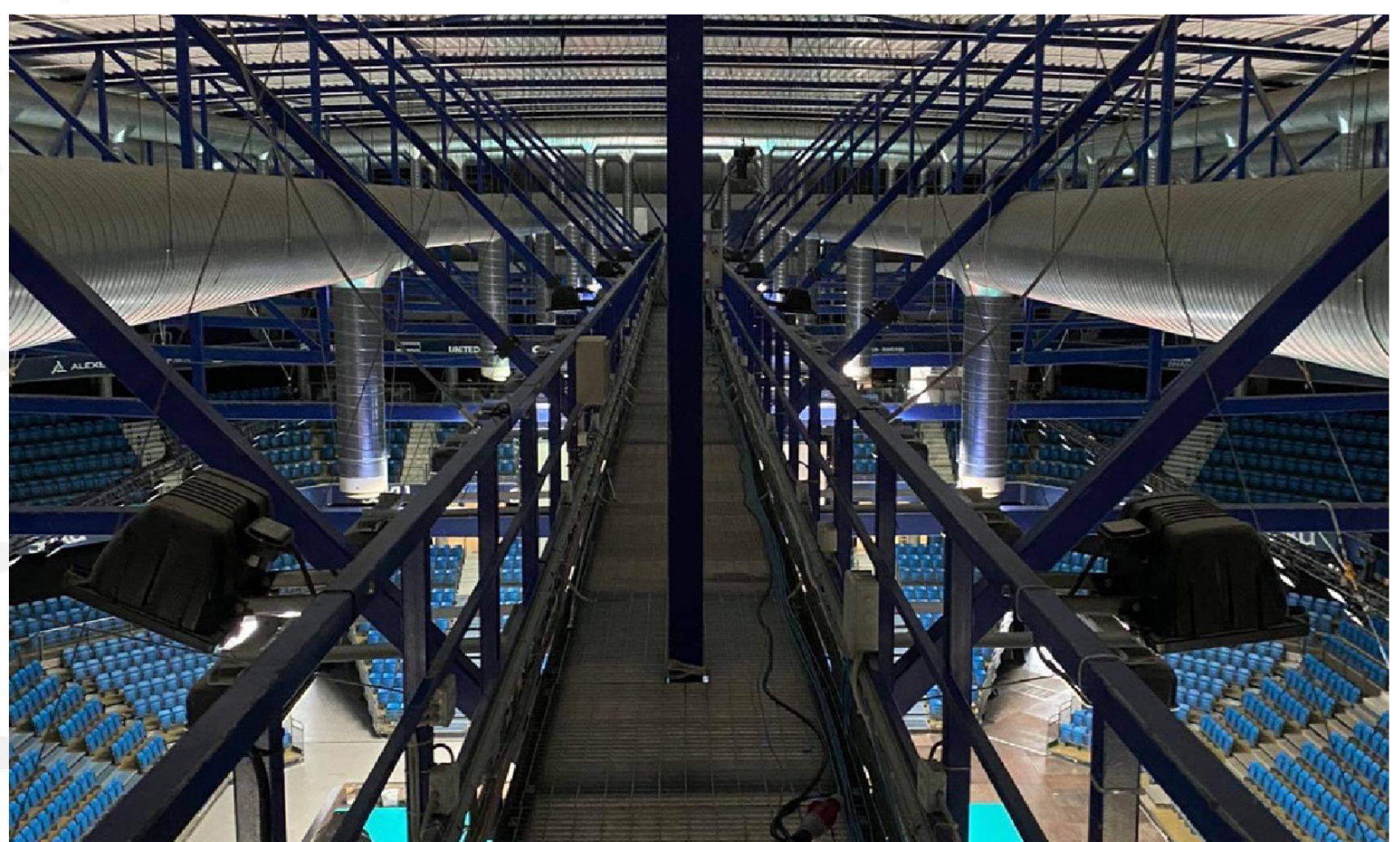
Ceiling: 16 m



Lower part of the ceiling: 14.5 m

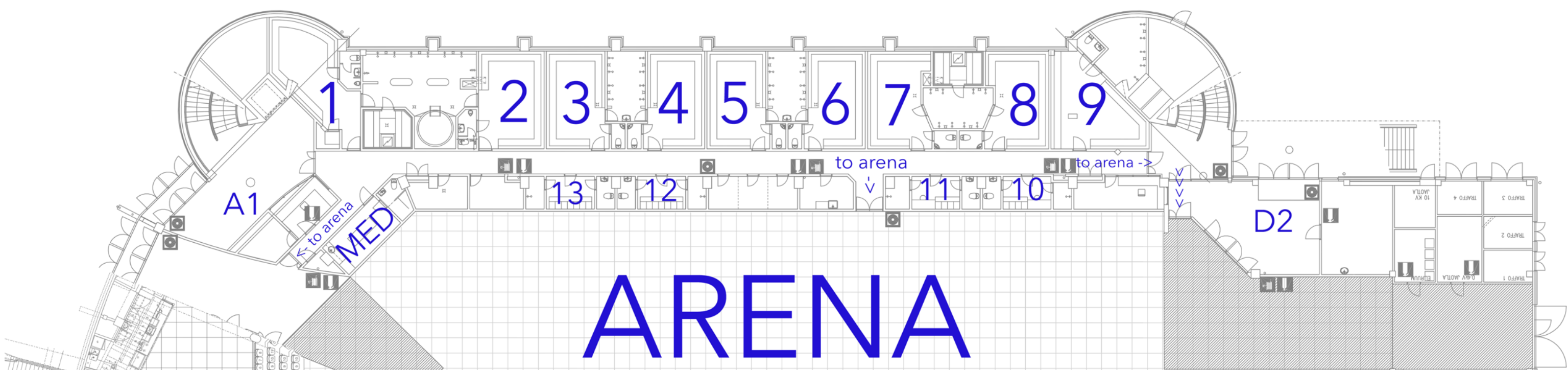


Bridge under the ceiling:



BACKSTAGE

no.	m ²	shower	sauna
1	29.4	connected	yes
2	27.6		
3	25.1	connected	
4	24.5		
5	25.1	connected	
6	24.5		
7	24.8	connected	yes
8	30.5		
9	6.8	separate	
10	6.8	separate	
11	6.8	separate	
12	6.8	separate	
13	6.8	separate	
MED	11.9	separate	



ARENA

Backstage area is accessed through A1 entrance.

In order to get to the arena from the backstage wardrobes, you need to walk through D2.

ADDITIONAL INFORMATION

Sound

- PA for announcements and background music, not suitable for concerts
- 2 wireless microphones functioning in the area of the arena
- Possible to use playable media through CD, USB, HDMI, AUX

Lighting

- Arena lightning max 1500 lux (colour temperature 5500K)
- 3 different light intensity levels, possible to create different setups depending on the type of event
- Possible to control each lamp individually and change intensity percentage-wise. Consult with venue
- Possibility to rent extra lighting

LED-cubic and Panels

- LED-cubic with 4 sides, can be used for sporting events or any other video transmissions, size of one side 5x3 m
- Can be rented out separately as LED-panels with a panel size of 1x0,5 m
- Total amount of LED-screen available: 90 m²
- Pixel pitch: 5.95 mm
- Resolution of one panel: 84x167 px

Security

- Manned security on demand (Meeskond Security, G4S, Forus Security, GSG)
- Door access system with key cards
- Security cameras inside and around the building

ADDITIONAL INFORMATION

Medical

- Ambulance and/or equipment on demand
- First aid room available

Access and Parking

- From the city center by car 15 min, by public transport 25 min
- From the airport 20 min
- Closest bus station 200 m
- Arena parking lot has 380 spaces, lots of extra parking spaces around the venue
- Possibility to park buses and trucks (up to 12 trucks)

Rooms

- Extra rooms and restaurants for for receptions, press conferences, catering, etc
- 35 skyboxes and lounges with comfortable equipment

Ticketing

- Fixed partners are Piletilevi, Piletikeskus, Ticketer and Piletitasku
- Two sales points in the venue, which can be used during the rental period

When organising an event at Unibet Arena, the organiser of the event is obliged to conduct all their activities according to the small space rental order agreement concluded with the Lessor or the Unibet Arena rental agreement and its general terms and conditions as well as the orders of the project manager of Unibet Arena, which are based on these internal rules.

CONTACT INFORMATION



+372 6 600 200



info@unibetarena.com



www.unibetarena.com

UNIBETT

ARENA